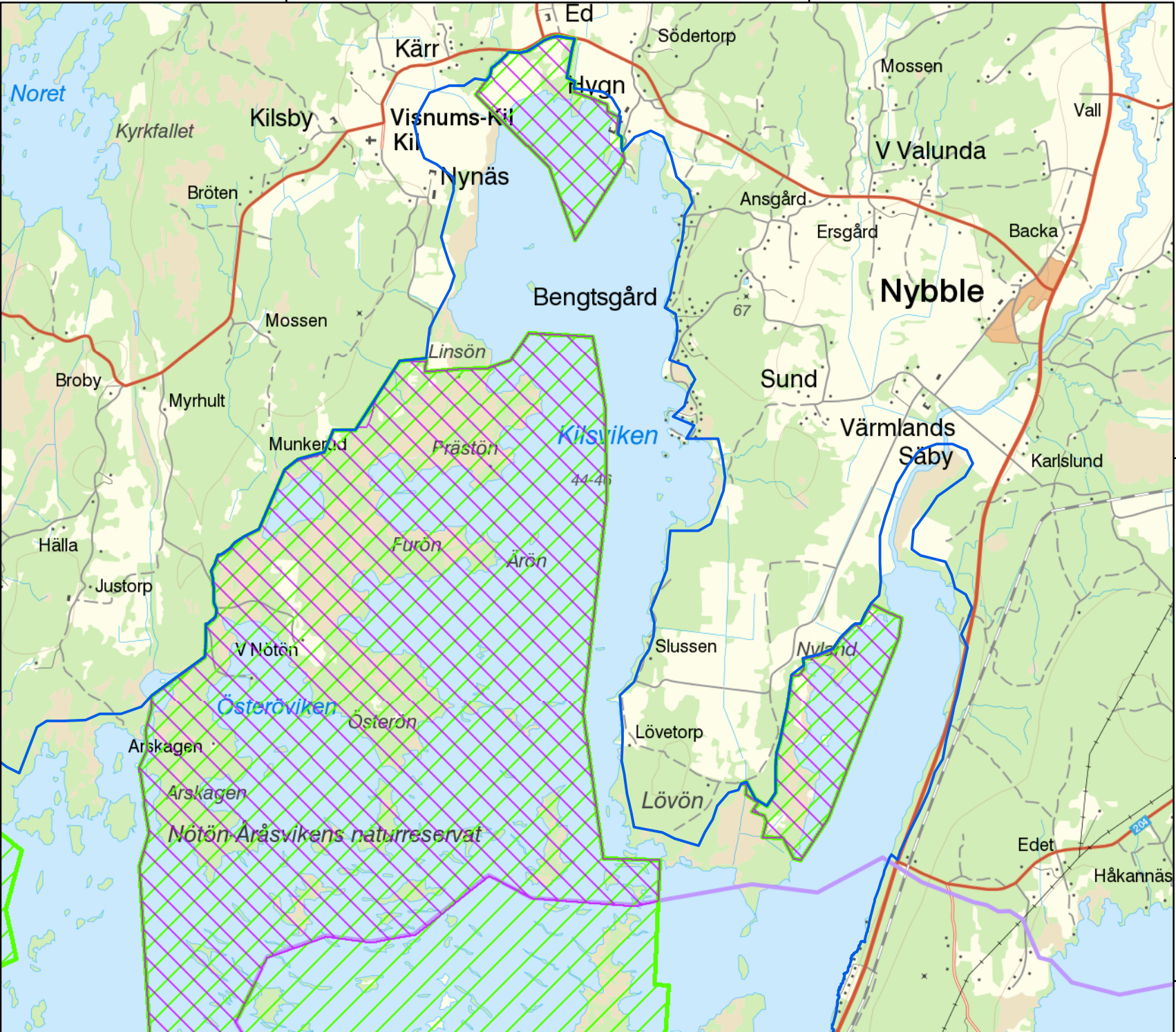


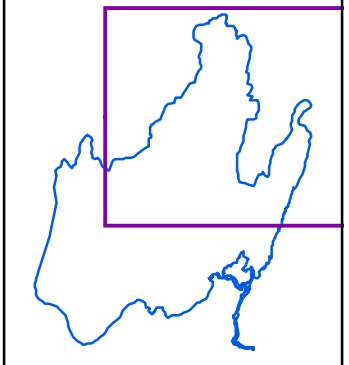
445000

450000



### Kilsviken-Aråsviken

Northern part



#### Legend

- Ramsar site
- Protected area
- Natura 2000 site
- Built-up area
- Mire
- Open area
- Water
- Forest

#### Data sources

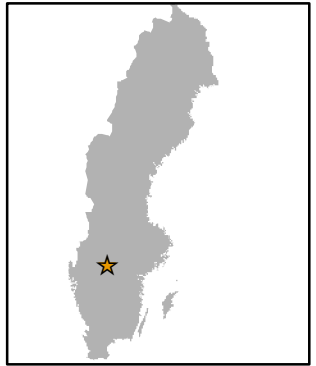
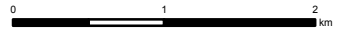
Topographic background map: ©Lantmäteriet dnr:109-2011/3027  
 Ramsar sites vector data: ©Naturvårdsverket Oct 2014 Decision to be taken 2015  
 Natura 2000 vector data: ©Naturvårdsverket Jan 2014  
 Nature reserves vector data: ©Naturvårdsverket Oct 2014

This map was produced by Metria AB Oct 2014.  
 ©2014 Naturvårdsverket

#### Cartographic information

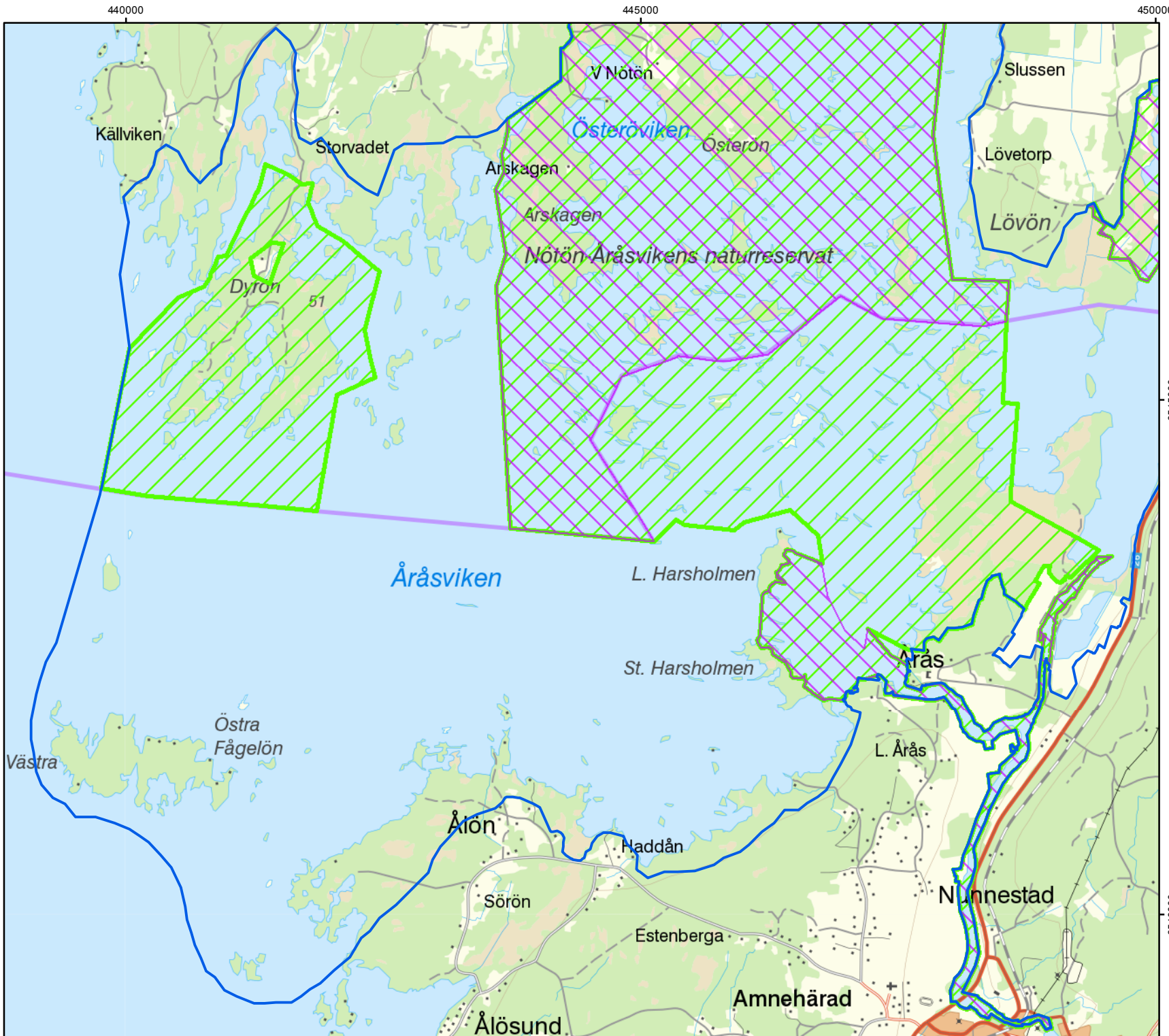
Coordinate system: SWEREF99  
 Projection: Transverse Mercator  
 Coordinates of Ramsar site: 59°5'N 14°6'E (Northern part)

Scale: 1:50 000 for A4 prints



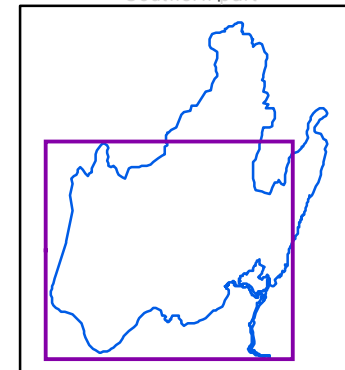
655000

6545000











## Kilsviken-Åråsviken

Southern part



### Legend

	Ramsar site		Mire
	Protected area		Open area
	Natura 2000 site		Water
	Built-up area		Forest

### Data sources

Topographic background map: ©Lantmäteriet  
dnr:109-2011/3027  
Ramsar sites vector data: ©Naturvårdsverket Oct 2014  
Decision to be taken 2015  
Natura 2000 vector data: ©Naturvårdsverket Jan 2014  
Nature reserves vector data: ©Naturvårdsverket Oct 2014

This map was produced by Metria AB Oct 2014.  
©2014 Naturvårdsverket

### Cartographic information

Coordinate system: SWEREF99  
Projection: Transverse Mercator  
Coordinates of Ramsar site:  
59°2'N 14°1'E (Southern part)

Scale: 1:50 000 for A4 prints

