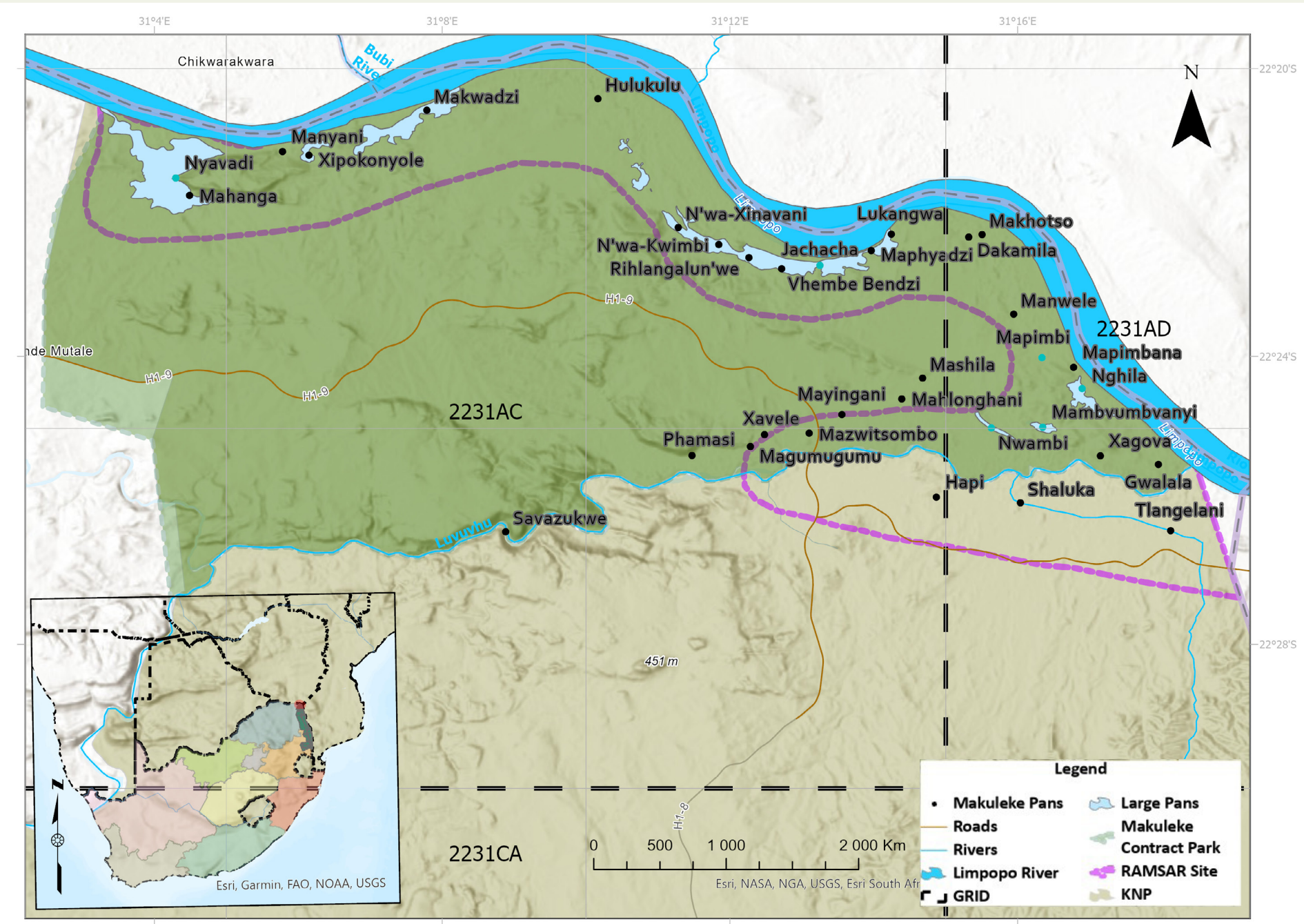
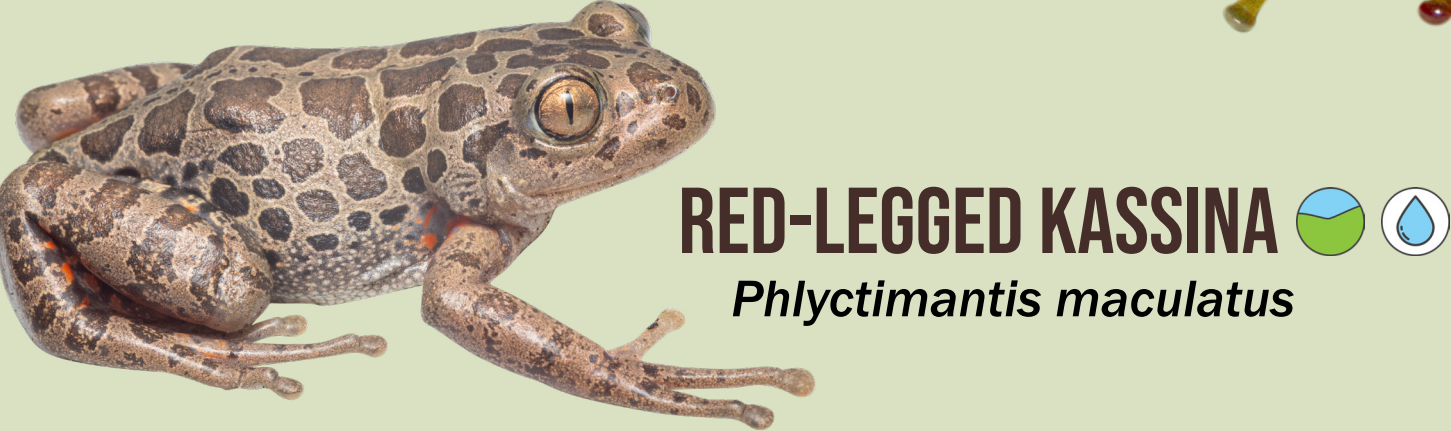
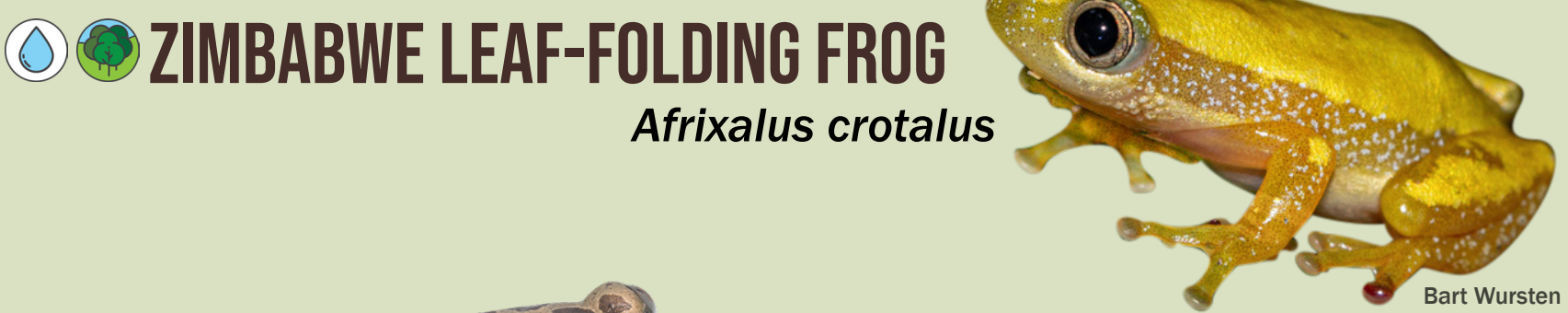
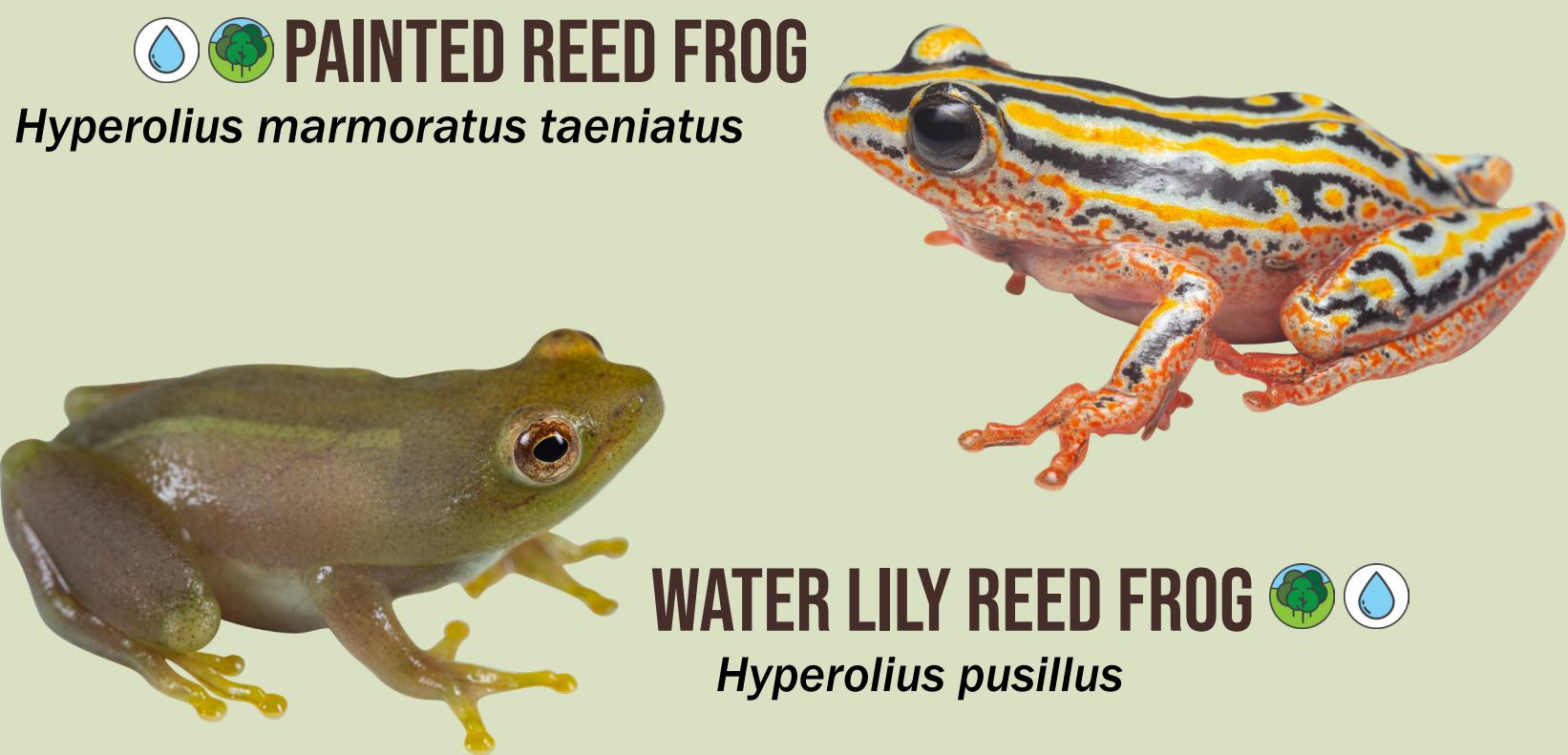


FROGS OF MAKULEKE CONTRACTUAL PARK



The Makuleke Contractual Park, in the northern reaches of Kruger National Park, is a vibrant and diverse natural area teeming with wildlife. The area is characterised by high densities of permanent and temporary wetlands, which play host to a wide variety of waterbirds, fish, invertebrates and frogs. While often overlooked, frogs are a critical component of most foodwebs as they contribute to both the terrestrial and aquatic ecosystems as both predator and prey. There are approximately 30 species of frog found within the Makuleke Contractual Park, and although small, and very loud, they are a critical component of what makes this region so special.

REED FROGS & RELATED SPECIES



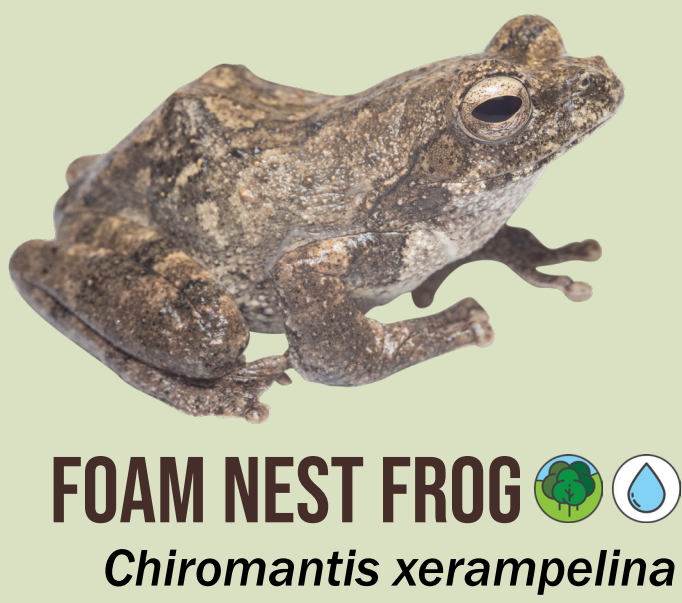
RAIN FROGS



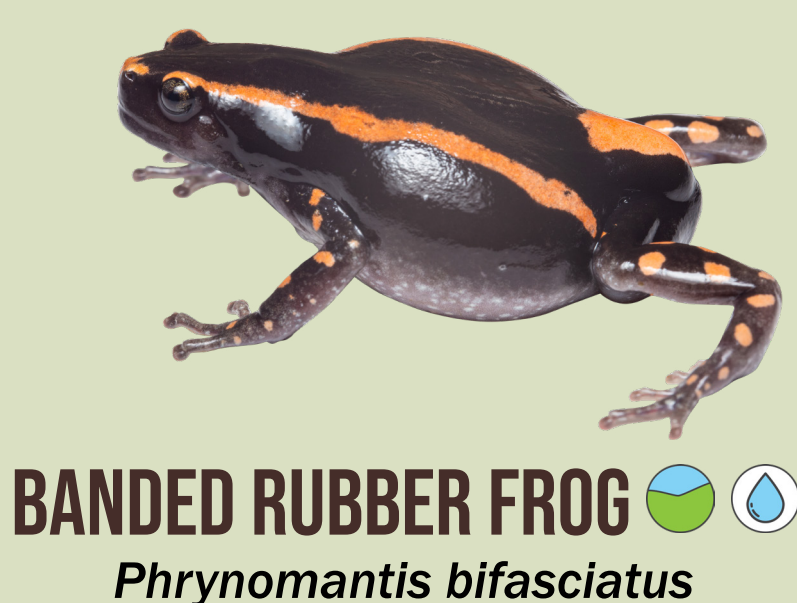
GRASS FROGS



FOAM NEST FROGS



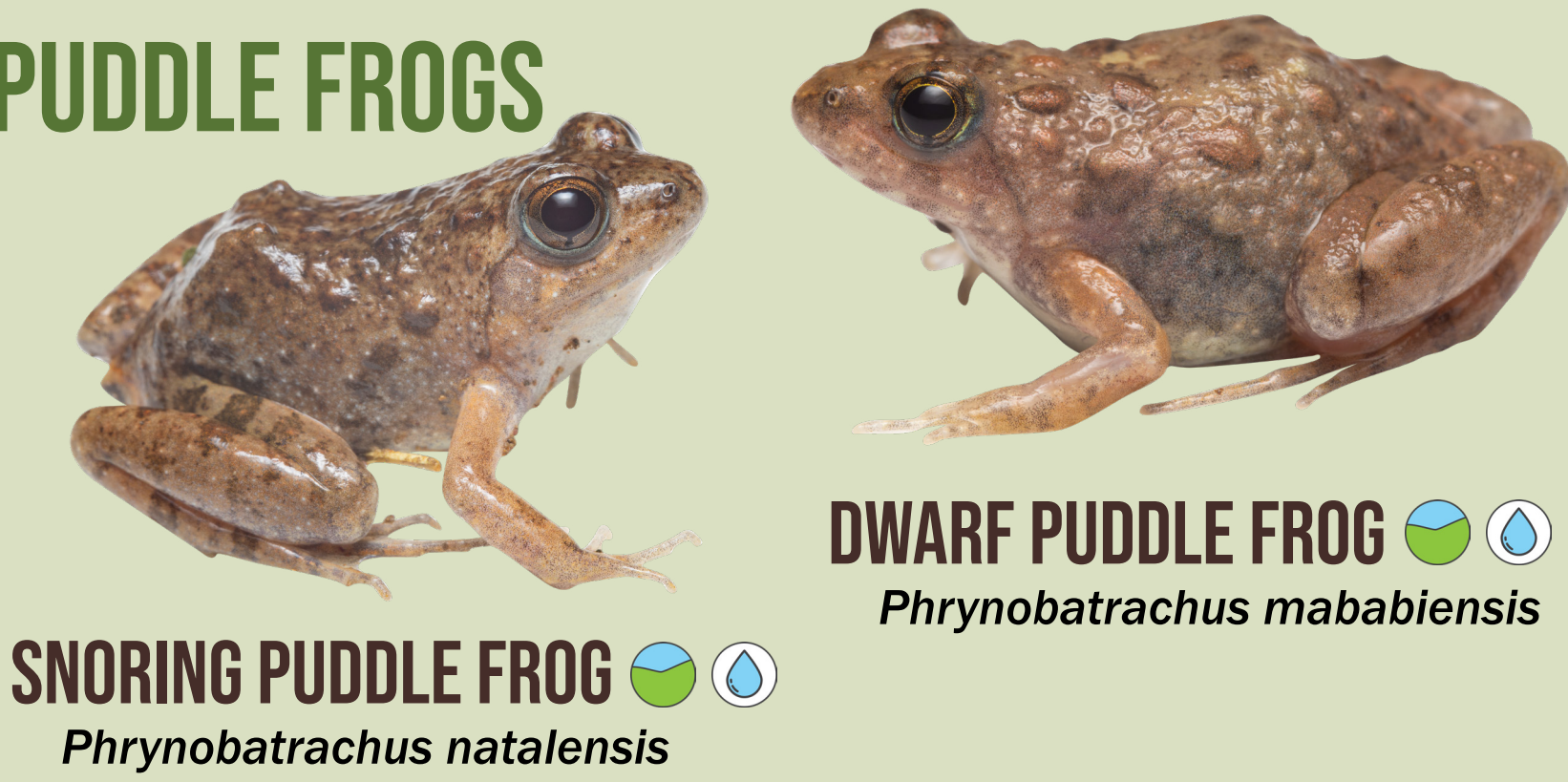
RUBBER FROGS



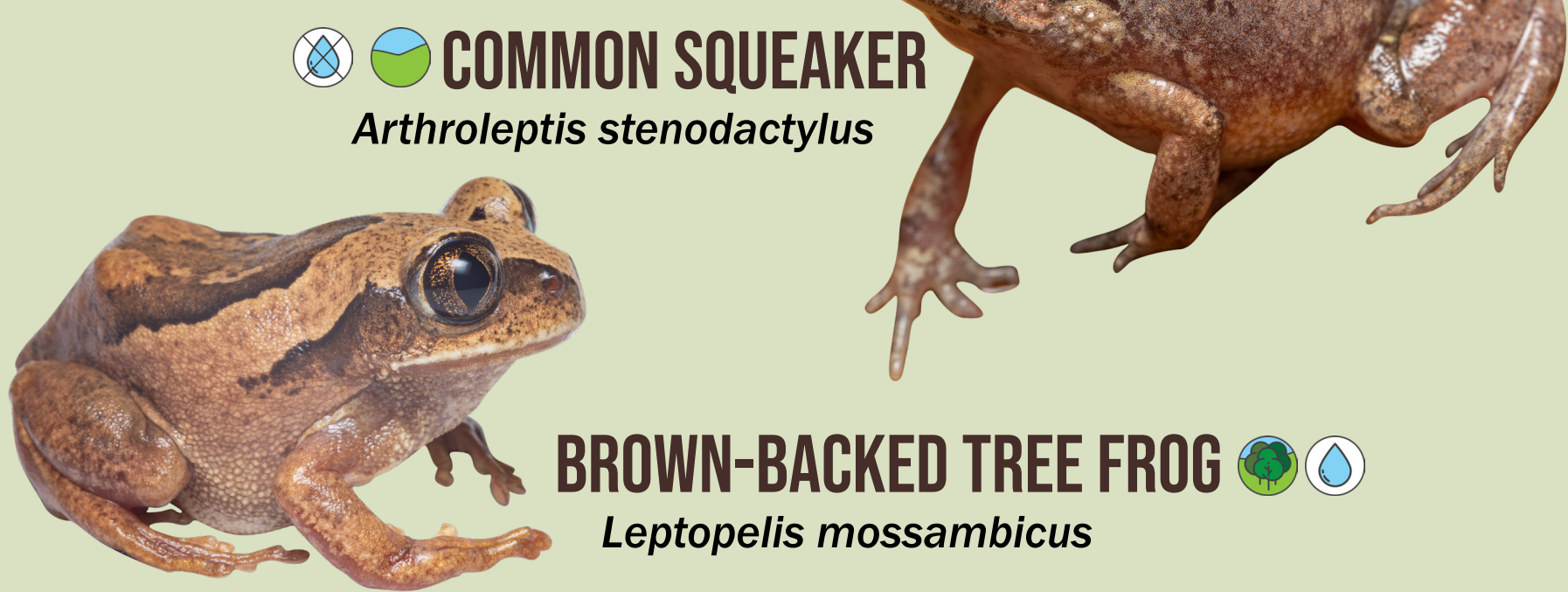
SHOVEL-NOSED FROGS



PUDDLE FROGS



TREE FROGS & SQUEAKERS



AFRICAN COMMON FROGS



PLATANNAS



KEY

- ECOLOGY**
- Arboreal
 - Terrestrial
 - Aquatic
- BREEDING**
- Water Independent
 - Water Dependent

TOADS

