

A N E X O S

LISTADO DE ESPECIES VEGETALES REGISTRADAS PARA EL ÁREA DE CONSERVACIÓN ECOLÓGICA “EL TEXCAL”

(Fuente: Periódico Oficial Tierra y Libertad, 2005)

La vegetación del área se encuentra representada de la siguiente manera: selva baja caducifolia o bosque tropical caducifolio, predominando los géneros de leguminosas y con elementos de matorral crasicaule como: *Opuntia*, *Pachycereus* y *Stenocereus*.

Se tienen registradas 21 familias y 94 especies de plantas, además de 65 especies de hongos comprendidos en 45 géneros. Los usos principales que recibe la flora que se encuentra presente en el área son los siguientes: alimenticio, medicinal y maderable.

ANACARDIACEAE

Comocladia engleriana

ANNONACEAE

Annona cherimola

APOCYNACEAE

Plumeria rubra

Stemmadenia bella

BIGNONIACEAE

Tecoma stans

Crescentia alata

BOMBACEAE

Pseudobombax ellipticum

Ceiba aesculifolia

BORAGINAECEAE

Cordia morelosana

BURSERACEAE

Bursera bicolor

Bursera bipinnata

Bursera grandifolia

Bursera glabrifolia

CACTACEAE

Opuntia atropes

Opuntia pumila

Pachycereus grandis

Isolatocereus dumortieri

CONVOLVULACEAE

Ipomoea arborescens

(COMPOSITAE) ---ASTERACEAE---

Bidens squarrosa
Brickellia glomerata
Milleria quinqueflora
Senecio morelensis
Senecio salignus
Tagetes micrantha
Tagetes tenuifolia
Tithonia tubaeformis
Zinnia peruviana

EUPHORBIACEAE

Croton morifolius
Euphorbia fulva
Sapium macrocarpum

JULIANACEAE

Amphipterygium adstringens

(LABIATAE) LAMIACEAE

Asterohyptis stellulata
Salvia leptostachys
Salvia polystachya
Salvia sessei

(LEGUMINOSEAE) FABACEAE

Acacia bilimekii
Acacia farnesiana
Acacia pennatula
Caesalpinia coriaria
Calliandra sp.
Conzattia multiflora
Coursetia glandulosa
Eriosema grandiflorum
Erythrina americana
Eysenhardtia polystachya
Gliricidia sepium
Indigofera platycarpa
Leucaena esculenta
Lonchocarpus rugosus
Lysiloma acapulcensis
Lysiloma divaricata
Mimosa albida

Mimosa lacerata
Mimosa polyanthum.
Nissolia fruticosa
Pithecellobium dulce
Prosopis laevigata
*Rynchosia cuernavaca**
*Rynchosia pyramidalis **
Senna holwayana
Senna skinneri
Senna hirsuta var. leptocarpa
Senna peralteana
Zornia diphylla

MELIACEAE

Cedrela oaxacensis
Trichilia hista

MORACEAE

Ficus cotinifolia
Ficus peteolaris

PLUMBAGINACEAE

Plumbago scandens

RUBIACEAE

Randia capitata

SAPINDACEAE

Dodonaea viscosa
Serjania triquetra
Sapindus saponaria

RUBIACEAE

Chicoca pubescens
Randia capitata

STERCULIACEAE

Guazuma ulmifolia

LISTADO DE ESPECIES DE FAUNA REGISTRADAS PARA EL ÁREA DE CONSERVACIÓN ECOLÓGICA “EL TEXCAL”

(Fuente: Periódico Oficial Tierra y Libertad 2005 y archivos de la CEAMA)

| Grupo | Nombre común | Nombre científico |
|--------------|------------------------------|--------------------------------|
| Mamíferos | Rata | <i>Neotoma mexicana</i> |
| Mamíferos | Ardilla de las rocas | <i>Spermophilus variegatus</i> |
| Mamíferos | Ardilla arborícola | <i>Sciurus aureogaster</i> |
| Mamíferos | Armadillo | <i>Dasypus novemcinctus</i> |
| Mamíferos | Tlacuache | <i>Didelphis virginiana</i> |
| Mamíferos | Conejo común | <i>Sylvilagus floridanus</i> |
| Mamíferos | Zorrillo | <i>Mephitis macroura</i> |
| Mamíferos | Zorrillo | <i>Spilogale spp</i> |
| Mamíferos | Cacomixtles | <i>Bassariscus astutus</i> |
| Mamíferos | Tejón | <i>Nasua narica</i> |
| Mamíferos | Ardilla | <i>Sciurus aureogaster</i> |
| | | |
| Aves | Gavilán | <i>Buteo albonotatus</i> |
| Aves | Aguililla pescadora | <i>Pandion haliaetus</i> |
| Aves | Garza de ganado | <i>Bubulcus ibis</i> |
| Aves | Garcita verde | <i>Butorides striatus</i> |
| Aves | Aura | <i>Cathartes aura</i> |
| Aves | Zopilote | <i>Coragyps atratus</i> |
| Aves | Paloma ala blanca | <i>Zenaida asiatica</i> |
| Aves | Chachalaca | <i>Ortalis poliocephala</i> |
| Aves | Zambullidor de pico pinto | <i>Podilymbus podiceps</i> |
| Aves | Pájaro bandera | <i>Trogon elegans</i> |
| Aves | Lechuza | <i>Tyto alba</i> |
| Aves | Chupamirto prieto | <i>Cynanthus sordidus</i> |
| | | |
| Reptiles | Lagartija de collar | <i>Sceloporus spp.</i> |
| Reptiles | Falso camaleón | <i>Phrynosoma sp.</i> |
| Reptiles | Iguana verde | <i>Iguana iguana</i> |
| Reptiles | Iguana negra | <i>Ctenosaura pectinata</i> |
| Reptiles | Lagartija listada | <i>Cnemidophorus sp.</i> |
| Reptiles | Lagartija de cola azul | <i>Eumeces sp.</i> |
| Reptiles | Escorpión | <i>Heloderma horridum</i> |
| Reptiles | Cincuate | <i>Pituophis Deppei</i> |
| Reptiles | Toluca | <i>Conopsis sp.</i> |
| Reptiles | Víbora coralillo | <i>Micrurus laticollaris</i> |
| Reptiles | Víbora de cascabel | <i>Crotalus durissus</i> |

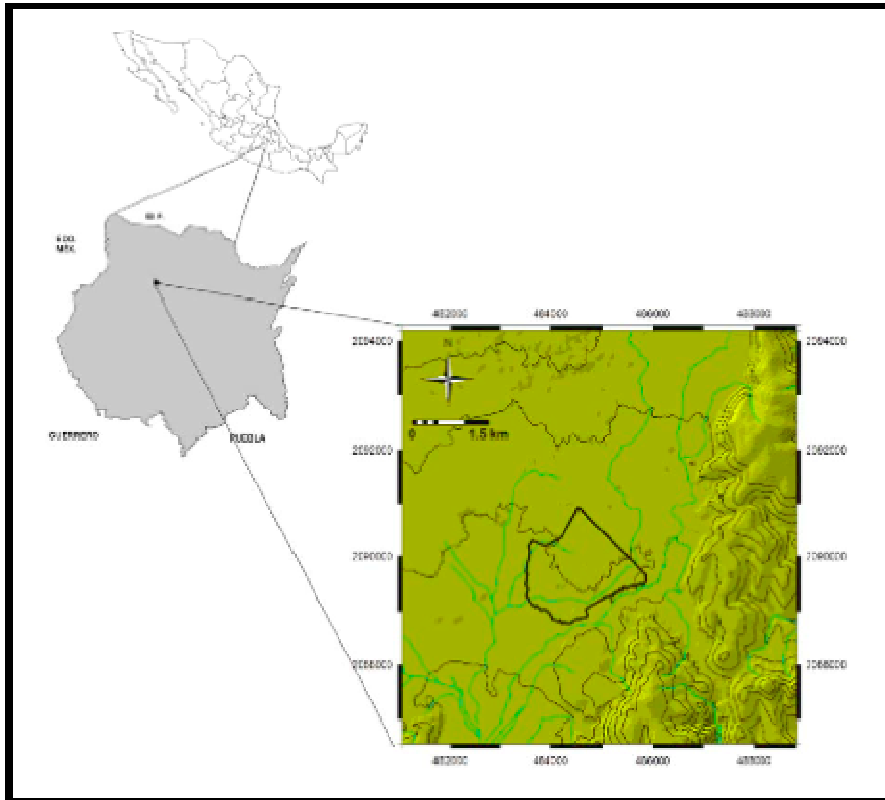
| | | |
|----------|------------------|-------------------------------|
| Anfibios | Ranita verde | <i>Hyla plicata</i> |
| Anfibios | Rana | <i>Rana zweifeli</i> |
| Anfibios | Rana niño | <i>Pachymedusa dacnicolor</i> |
| Anfibios | Sapo | <i>Bufo marinus</i> |
| Anfibios | Sapo | <i>Bufo marmoratus</i> |
| Anfibios | Rana | <i>Smilisca baudini</i> |
| Peces | Trucha arcoiris | <i>Oncorhynchus mykiss</i> |
| Peces | Cola de espada | <i>Xiphophorus variatus</i> |
| Peces | Carpa del Balsas | <i>Notropis boucardi</i> |

Coordenadas del sitio Ramsar propuesto "El Texcal"

| LADO | COORDENADAS UTM X | COORDENADAS UTM Y | LATITUD | LONGITUD |
|-------|----------------------|----------------------|------------------|------------------|
| 1-2 | 484,540.530 | 2,090,905.406 | 18°54'36.969204" | 99°8 '48.497405" |
| 2-3 | 485,875.526 | 2,089,655.479 | 18°53'56.336197" | 99°8 '2.826923" |
| 3-4 | 485,857.256 | 2,089,623.866 | 18°53'55.307172" | 99°8 '3.450660" |
| 4-5 | 485,884.701 | 2,089,580.917 | 18°53'53.910472" | 99°8 '2.511376" |
| 5-6 | 485,830.407 | 2,089,512.915 | 18°53'51.696616" | 99°8 '4.365552" |
| 6-7 | 485,802.061 | 2,089,513.755 | 18°53'51.723247" | 99°8 '5.334540" |
| 7-8 | 485,789.129 | 2,089,509.919 | 18°53'51.598117" | 99°8 '5.776485" |
| 8-9 | 485,755.593 | 2,089,507.361 | 18°53'51.514077" | 99°8 '6.922818" |
| 9-10 | 485,721.747 | 2,089,502.023 | 18°53'51.339548" | 99°8 '8.079645" |
| 10-11 | 485,700.345 | 2,089,483.425 | 18°53'50.733924" | 99°8 '8.810736" |
| 11-12 | 485,651.541 | 2,089,482.026 | 18°53'50.687158" | 99°8 '10.478973" |
| 12-13 | 485,642.852 | 2,089,493.573 | 18°53'51.062651" | 99°8 '10.776296" |
| 13-14 | 485,622.660 | 2,089,490.734 | 18°53'50.969777" | 99°8 '11.466454" |
| 14-15 | 485,610.040 | 2,089,494.835 | 18°53'51.102880" | 99°8 '11.897958" |
| 15-16 | 485,596.789 | 2,089,492.627 | 18°53'51.030705" | 99°8 '12.350865" |
| 16-17 | 485,513.059 | 2,089,441.833 | 18°53'49.375964" | 99°8 '15.211693" |
| 17-18 | 485,492.986 | 2,089,441.178 | 18°53'49.354163" | 99°8 '15.897851" |
| 18-19 | 485,474.658 | 2,089,452.740 | 18°53'49.729869" | 99°8 '16.524668" |
| 19-20 | 485,471.385 | 2,089,459.284 | 18°53'49.942713" | 99°8 '16.636720" |
| 20-21 | 485,447.279 | 2,089,462.411 | 18°53'50.043831" | 99°8 '17.460833" |
| 21-22 | 485,436.837 | 2,089,460.262 | 18°53'49.973636" | 99°8 '17.817703" |
| 22-23 | 485,418.104 | 2,089,438.769 | 18°53'49.273864" | 99°8 '18.457499" |
| 23-24 | 485,373.197 | 2,089,413.347 | 18°53'48.445599" | 99°8 '19.991883" |
| 24-25 | 485,349.314 | 2,089,412.921 | 18°53'48.431116" | 99°8 '20.808240" |
| 25-26 | 485,342.064 | 2,089,406.525 | 18°53'48.222841" | 99°8 '21.055894" |
| 26-27 | 485,324.579 | 2,089,382.221 | 18°53'47.431652" | 99°8 '21.652937" |
| 27-28 | 485,281.080 | 2,089,369.856 | 18°53'47.028228" | 99°8 '23.139556" |
| 28-29 | 485,175.876 | 2,089,294.135 | 18°53'44.561843" | 99°8 '26.733687" |
| 29-30 | 485,148.045 | 2,089,292.216 | 18°53'44.498686" | 99°8 '27.684987" |
| 30-31 | 485,125.012 | 2,089,274.945 | 18°53'43.936160" | 99°8 '28.471842" |
| 31-32 | 485,090.463 | 2,089,283.580 | 18°53'44.216226" | 99°8 '29.653066" |
| 33-34 | 484,664.691 | 2,089,026.982 | 18°53'35.856312" | 99°8 '44.199979" |
| 34-35 | 484,716.307 | 2,088,926.764 | 18°53'32.597012" | 99°8 '42.432833" |
| 35-36 | 484,697.819 | 2,088,893.858 | 18°53'31.525900" | 99°8 '43.063863" |
| 36-37 | 484,539.114 | 2,088,864.602 | 18°53'30.569745" | 99°8 '48.487900" |
| 37-38 | 484,455.251 | 2,088,822.326 | 18°53'29.192006" | 99°8 '51.353325" |
| 38-39 | 484,395.395 | 2,088,776.999 | 18°53'27.715621" | 99°8 '53.398044" |
| 39-40 | 484,318.607 | 2,088,782.521 | 18°53'27.893162" | 99°8 '56.022965" |
| 40-41 | 484,309.921 | 2,088,791.205 | 18°53'28.175468" | 99°8 '56.320114" |
| 41-42 | 484,223.646 | 2,088,789.711 | 18°53'28.124491" | 99°8 '59.269120" |
| 42-43 | 484,180.466 | 2,088,830.246 | 18°53'29.442155" | 99°9 '0.746297" |
| 43-44 | 484,168.694 | 2,088,805.469 | 18°53'28.635695" | 99°9 '1.147948" |
| 44-45 | 484,091.029 | 2,088,836.936 | 18°53'29.657340" | 99°9 '3.803623" |
| 45-46 | 484,046.173 | 2,088,854.581 | 18°53'30.230180" | 99°9 '5.337420" |
| 46-47 | 484,009.038 | 2,088,943.172 | 18°53'33.111545" | 99°9 '6.609375" |
| 47-48 | 483,925.208 | 2,089,017.427 | 18°53'35.525152" | 99°9 '9.477056" |
| 48-49 | 483,895.059 | 2,089,032.131 | 18°53'36.002712" | 99°9 '10.508066" |
| 49-50 | 483,865.844 | 2,089,032.506 | 18°53'36.014094" | 99°9 '11.506718" |
| 50-51 | 483,839.064 | 2,089,014.457 | 18°53'35.426101" | 99°9 '12.421585" |
| 51-52 | 483,813.761 | 2,089,020.079 | 18°53'35.608293" | 99°9 '13.286659" |
| 52-53 | 483,801.953 | 2,089,033.571 | 18°53'36.046934" | 99°9 '13.690683" |
| 53-54 | 483,773.614 | 2,089,071.269 | 18°53'37.272676" | 99°9 '14.660513" |
| 54-55 | 483,729.789 | 2,089,094.564 | 18°53'38.029349" | 99°9 '16.159267" |
| 55-56 | 483,702.796 | 2,089,068.641 | 18°53'37.185171" | 99°9 '17.081173" |
| 56-57 | 483,640.580 | 2,089,111.290 | 18°53'38.571000" | 99°9 '19.209168" |
| 57-58 | 483,620.887 | 2,089,131.594 | 18°53'39.231060" | 99°9 '19.882905" |
| 58-59 | 483,558.408 | 2,089,241.111 | 18°53'42.792512" | 99°9 '22.021905" |
| 59-60 | 483,520.690 | 2,089,281.747 | 18°53'44.113549" | 99°9 '23.312457" |
| 60-61 | 483,547.174 | 2,089,377.195 | 18°53'47.219805" | 99°9 '22.410047" |
| 61-62 | 483,561.560 | 2,089,417.349 | 18°53'48.526675" | 99°9 '21.919480" |

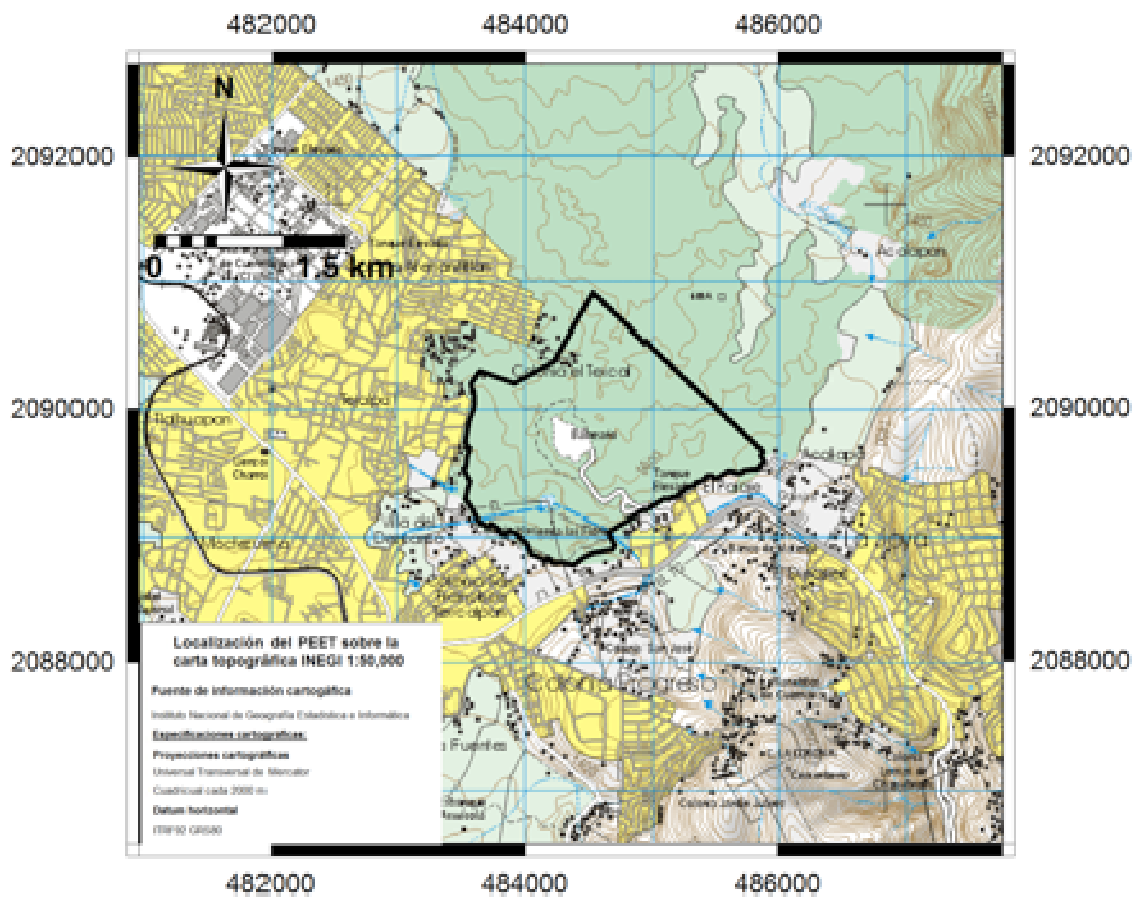
| LADO | COORDENADAS UTM X | COORDENADAS UTM Y | LATITUD | LONGITUD |
|-------|----------------------|----------------------|------------------|-----------------|
| 62-63 | 483,553.061 | 2,089,434.694 | 18°53'49.090770" | 99°9'22.210530" |
| 63-64 | 483,538.530 | 2,089,462.085 | 18°53'49.981517" | 99°9'22.708089" |
| 64-65 | 483,507.011 | 2,089,521.631 | 18°53'51.917993" | 99°9'23.787297" |
| 65-66 | 483,527.407 | 2,089,534.475 | 18°53'52.336483" | 99°9'23.090496" |
| 66-67 | 483,533.896 | 2,089,564.766 | 18°53'53.322216" | 99°9'22.869573" |
| 67-68 | 483,535.070 | 2,089,617.498 | 18°53'55.037937" | 99°9'22.831038" |
| 68-69 | 483,559.346 | 2,089,678.422 | 18°53'57.020851" | 99°9'22.003033" |
| 69-70 | 483,528.749 | 2,089,686.824 | 18°53'57.293327" | 99°9'23.049236" |
| 70-71 | 483,541.449 | 2,089,701.757 | 18°53'57.779561" | 99°9'22.615553" |
| 71-72 | 483,531.874 | 2,089,712.499 | 18°53'58.128787" | 99°9'22.943173" |
| 72-73 | 483,519.960 | 2,089,730.512 | 18°53'58.714494" | 99°9'23.350978" |
| 73-74 | 483,553.182 | 2,089,893.282 | 18°54'4.011336" | 99°9'22.220252" |
| 74-75 | 483,589.601 | 2,089,999.327 | 18°54'7.462633" | 99°9'20.978489" |
| 75-76 | 483,594.267 | 2,090,033.982 | 18°54'8.590299" | 99°9'20.820027" |
| 76-77 | 483,598.266 | 2,090,089.518 | 18°54'10.397355" | 99°9'20.684979" |
| 77-78 | 483,589.157 | 2,090,142.167 | 18°54'12.110074" | 99°9'20.997982" |
| 78-79 | 483,574.714 | 2,090,166.604 | 18°54'12.904714" | 99°9'21.492430" |
| 79-80 | 483,568.516 | 2,090,190.337 | 18°54'13.676719" | 99°9'21.705034" |
| 80-81 | 483,570.619 | 2,090,202.952 | 18°54'14.087215" | 99°9'21.633528" |
| 81-82 | 483,641.527 | 2,090,300.926 | 18°54'17.276924" | 99°9'19.212482" |
| 82-83 | 483,910.621 | 2,090,203.319 | 18°54'14.108827" | 99°9'10.010704" |
| 83-84 | 484,227.238 | 2,090,372.729 | 18°54'19.629533" | 99°8'59.192157" |
| 84-85 | 484,309.608 | 2,090,512.942 | 18°54'24.193768" | 99°8'56.380378" |
| 85-1 | 484,422.106 | 2,090,704.216 | 18°54'30.420089" | 99°8'52.540106" |

CARTOGRAFÍA



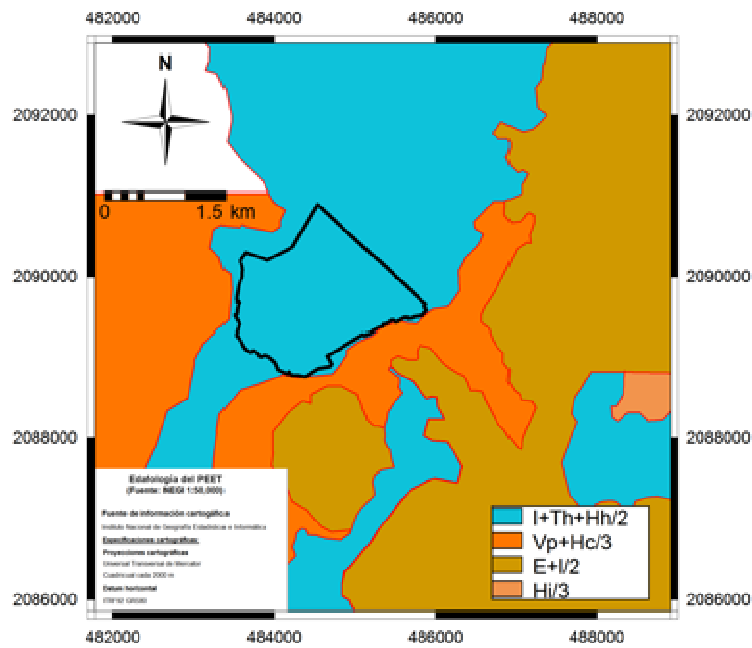
Ubicación General del humedal “El Texcal”. Municipio de Jiutepec, Morelos.

Fuente: CEAMA. 2009.



Ubicación del polígono propuesto de la Laguna de Hueyapan (El Texcal). Municipio de Jiutepec, Morelos. Carta INEGI 1:50,000

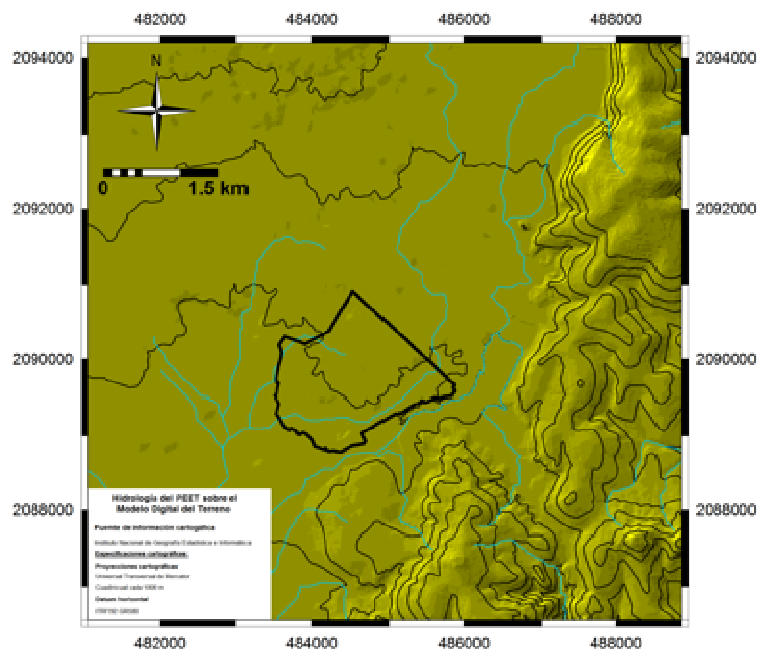
Fuente: CEAMA. 2009.



Abreviaturas: E: Rendzina, I: Litosol, Vp: Vertizol pelico, Hh: Phaeozem Hc: Phaeozem calcico,
Th: Andosol humito

Tipo de suelo del humedal "El Texcal".

Fuente: CETENAL, 1978 citado en CEAMA. 2009.



Hidrología del humedal "El Texcal".

Fuente: CETENAL, 1978 citado en CEAMA